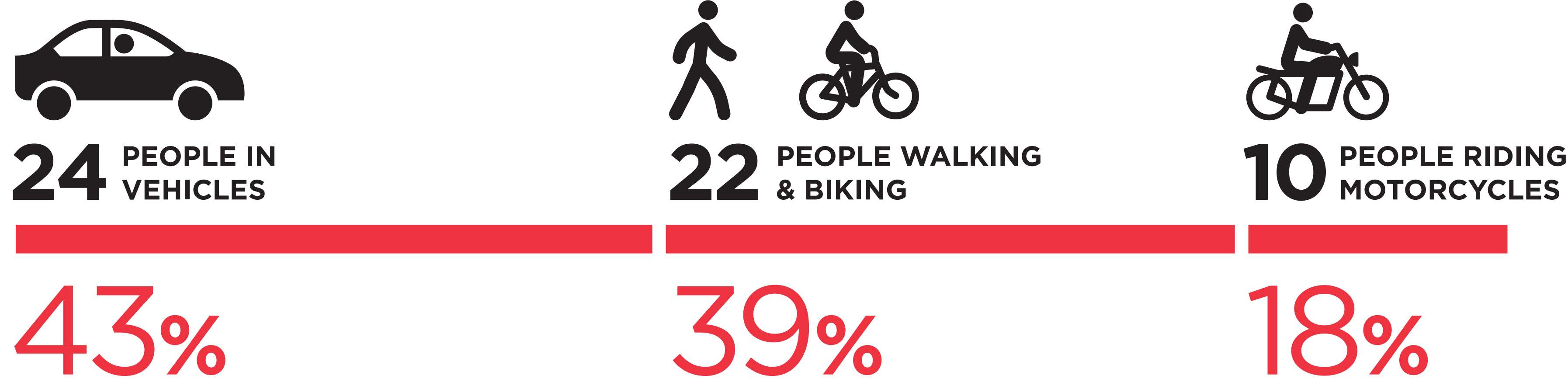


IT'S TIME FOR A SAFER HOOVER STREET

HERE IS WHY WE NEED TO TAKE ACTION RIGHT NOW

People killed and seriously injured on Hoover Street between Vernon Avenue and Manchester Avenue

WHAT KINDS OF COLLISIONS ARE KILLING AND SERIOUSLY INJURING PEOPLE?
CRASHES AFFECT EVERYONE WHO SHARES THE STREET

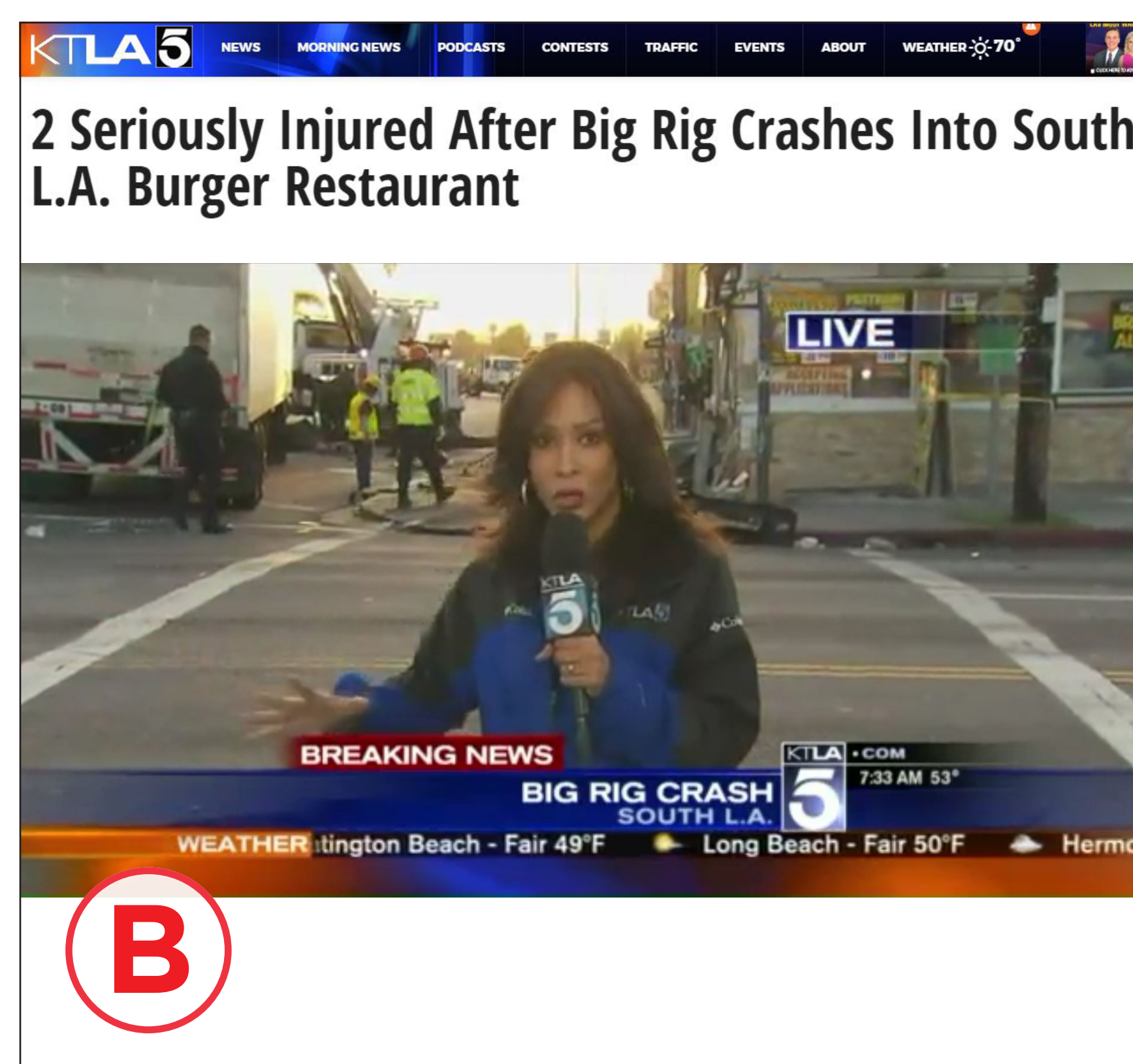


Distribution of severe and fatal collisions on Hoover Street. Source: CHP, LAPD, LADOT 2009-2017. It takes time to process and verify collision records. Data from 2014-2017 is provisional. The collision intensity map uses verified data from 2009-2013 to show multi-year collision trends.

WHY DOES THIS MATTER?



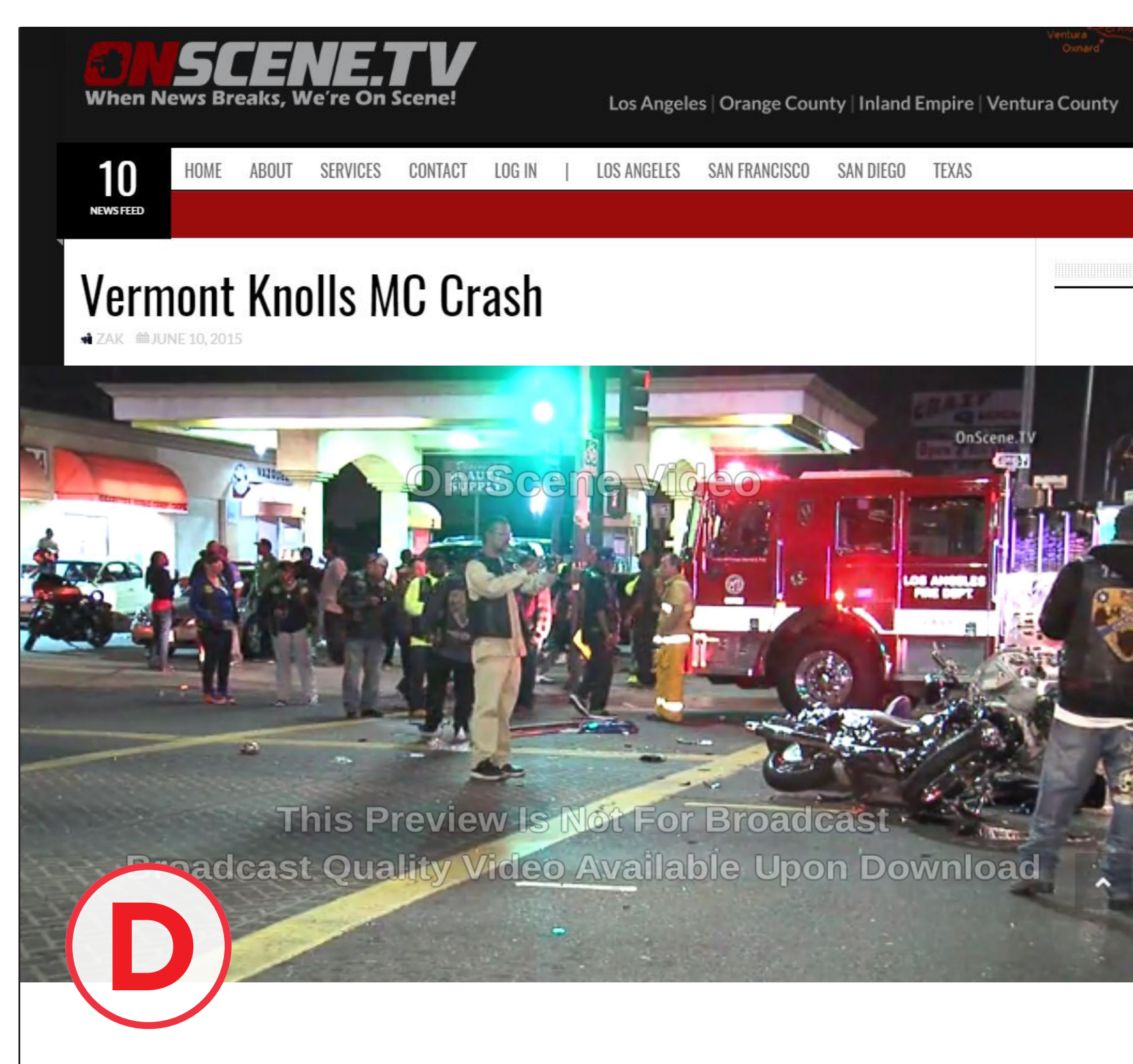
Source: ABC 7 News. Published: September 27, 2014.



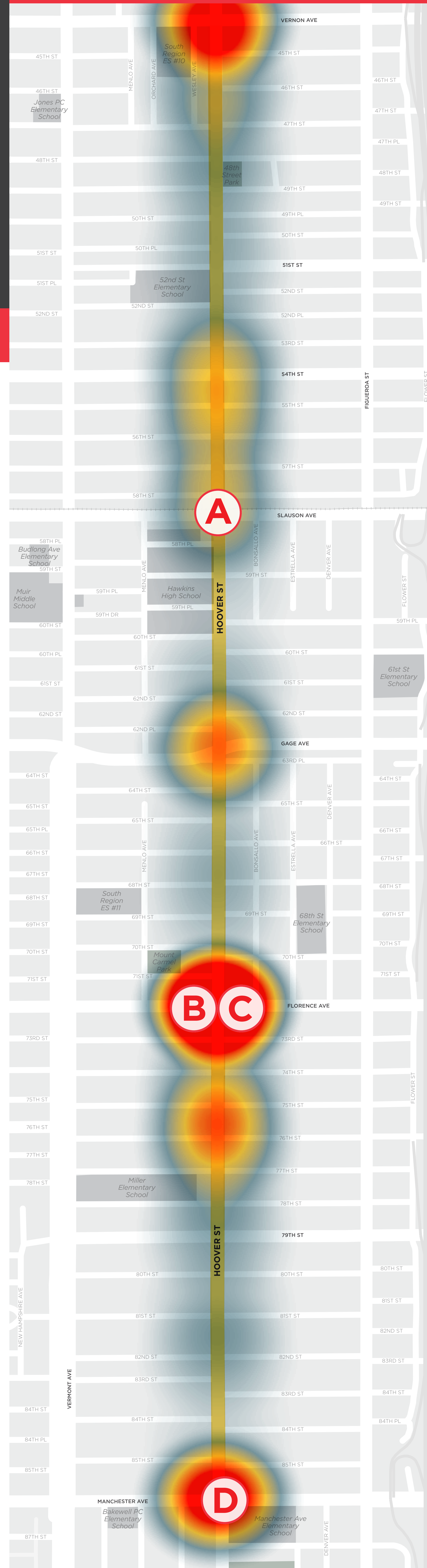
Source: KTLA 5 News. Published: March 13, 2016.



Source: Los Angeles Daily News. Published: March 16, 2015.



Source: ABC 7 News. Published: June 10, 2015.



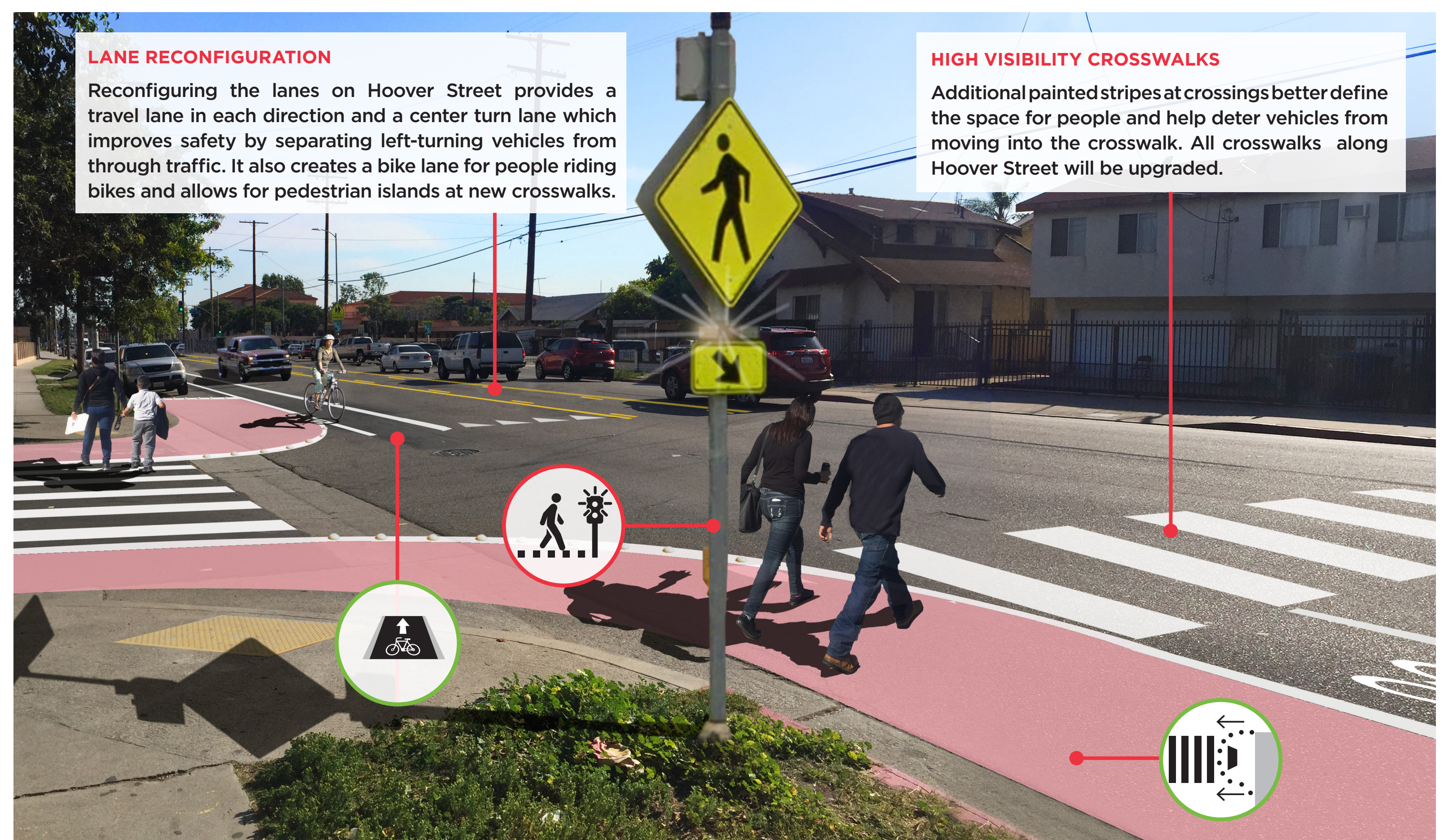
LET'S IMPROVE HOOVER STREET TO SAVE LIVES

WE WANT TO HEAR FROM YOU

What is being planned on Hoover Street to improve safety?

LEGEND

- | | |
|-----------------------------|-------------------------|
| PHASE I | PHASE II |
| Reorganize the Street | Bicycle Lanes |
| Speed Feedback Sign | Signal Timing |
| Leading Pedestrian Interval | Intersection Tightening |
| Add RRFB to Crosswalk | New Crosswalk with RRFB |
| Protected Turns | New Traffic Signal |
| Curb Extension | Bus Stop Relocation |



What are your traffic safety observations along the corridor?

ON THE MAP TO THE LEFT, PLEASE MARK SPECIFIC TRAFFIC SAFETY CONCERNS



LEAVE A POST-IT NOTE HERE TO TELL US GENERAL TRAFFIC SAFETY CONCERNS FOR THE CORRIDOR

