

IT'S TIME FOR A SAFER WESTERN AVENUE

HERE IS WHY WE NEED TO TAKE ACTION RIGHT NOW

People killed and seriously injured on Western Avenue between Washington Boulevard and Century Boulevard

WHAT KINDS OF COLLISIONS ARE KILLING AND SERIOUSLY INJURING PEOPLE?
CRASHES AFFECT EVERYONE WHO SHARES THE STREET


62 PEOPLE IN VEHICLES


88 PEOPLE WALKING & BIKING


9 PEOPLE RIDING MOTORCYCLES

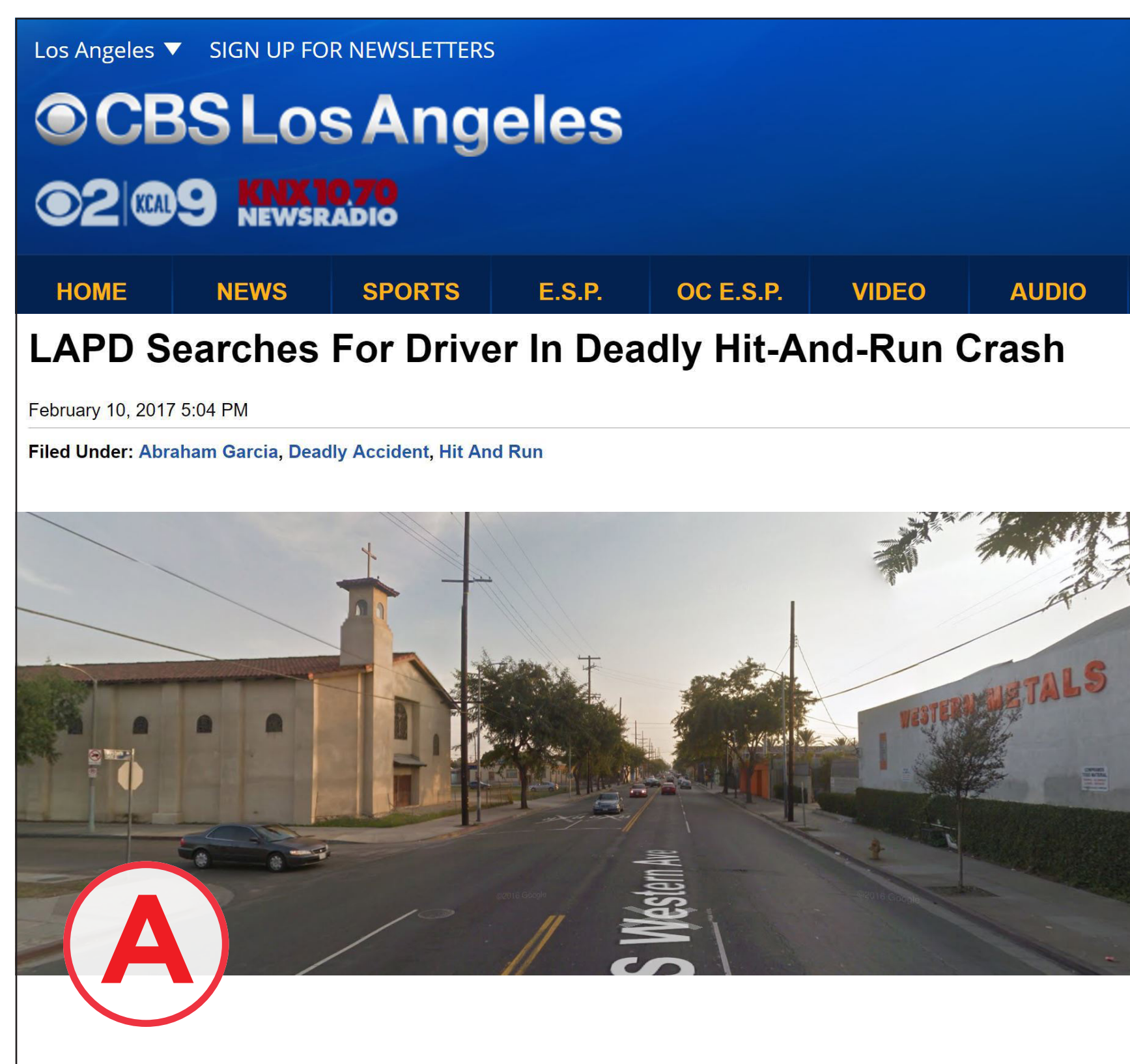
39%

55%

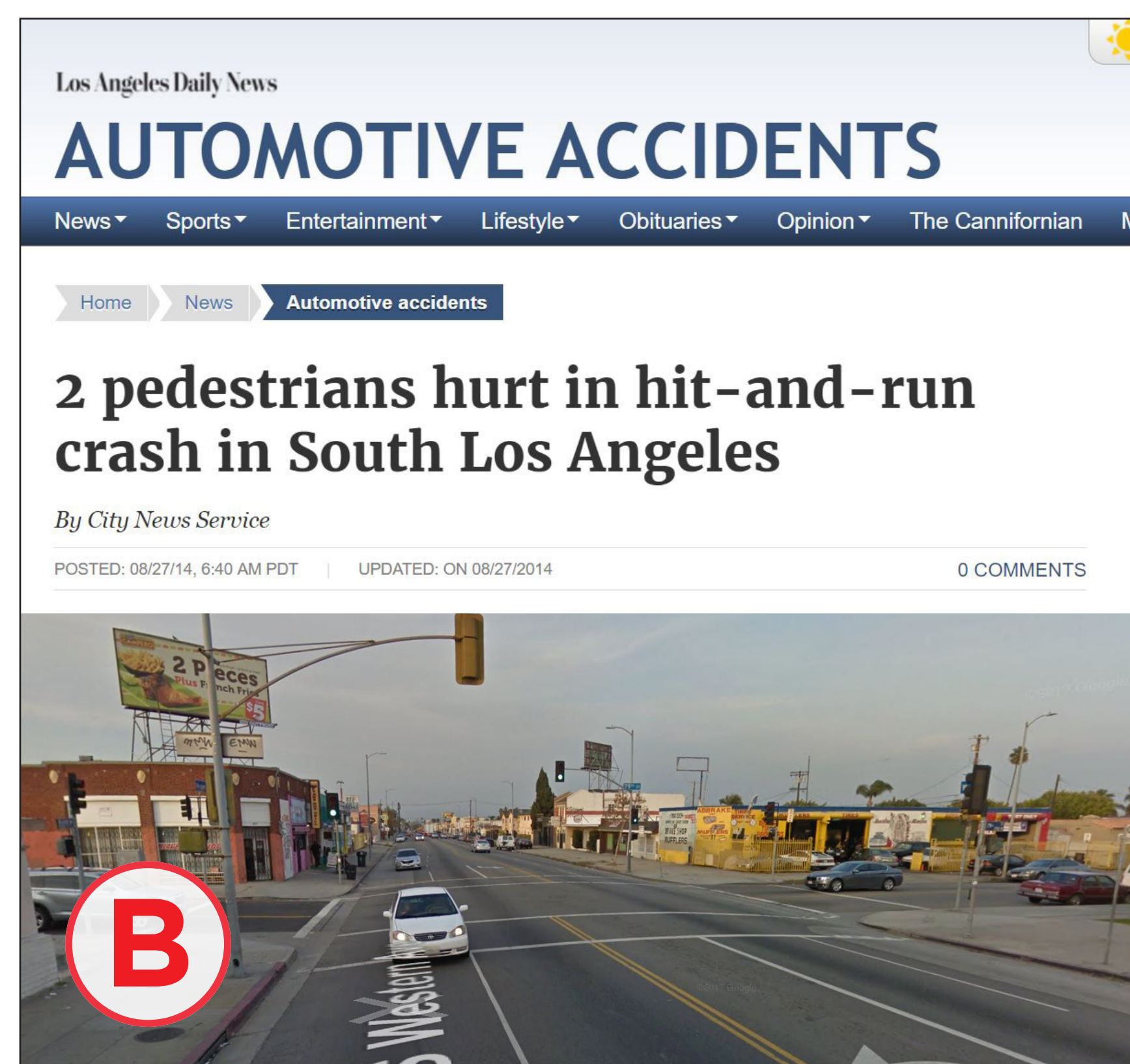
6%

Distribution of severe and fatal collisions on Hoover Street. Source: CHP, LAPD, LADOT 2009-2017. It takes time to process and verify collision records. Data from 2014-2017 is provisional. The collision intensity map uses verified data from 2009-2013 to show multi-year collision trends.

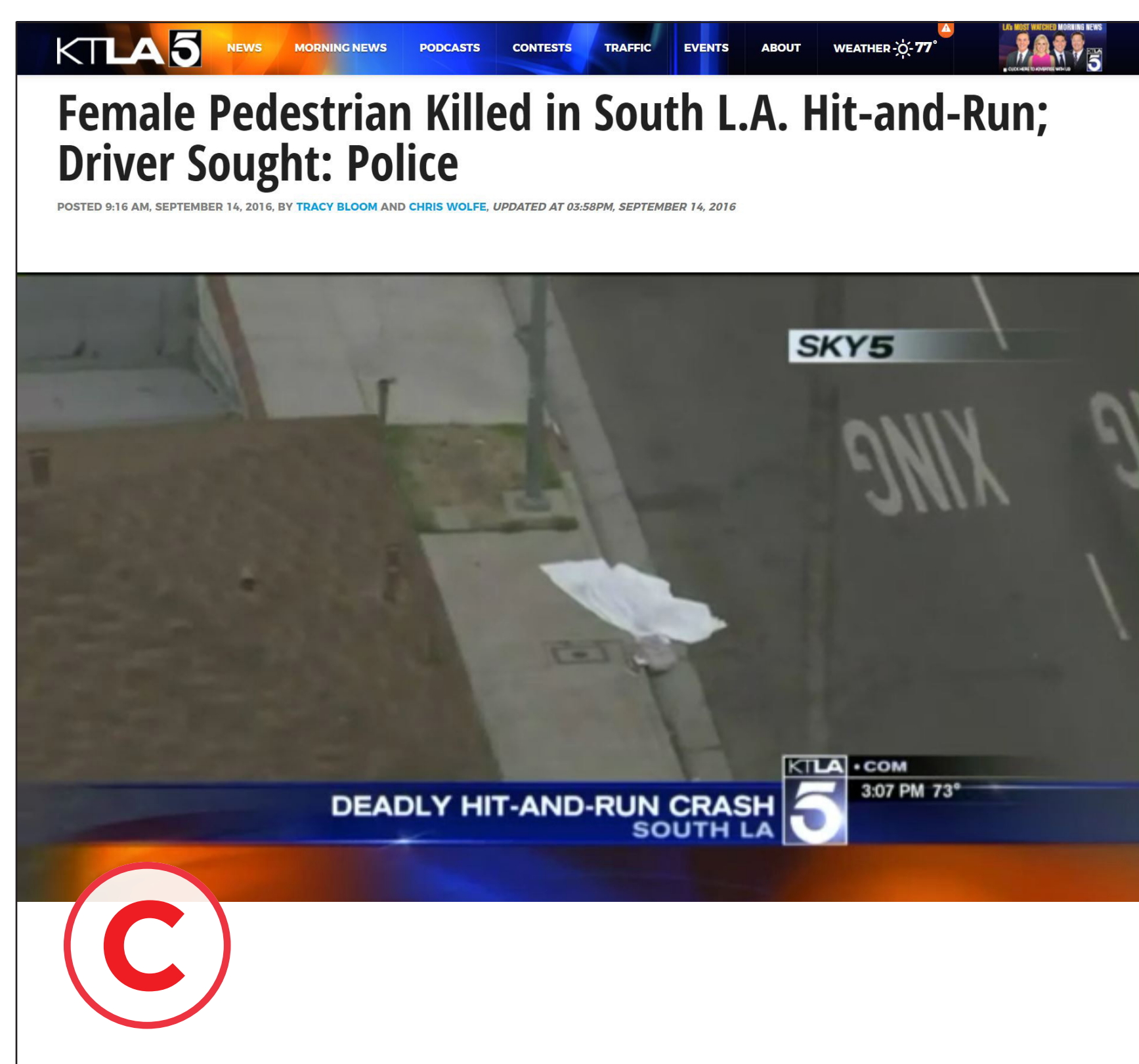
WHY DOES THIS MATTER?
COLLISIONS LIKE THESE IMPACT OUR COMMUNITIES



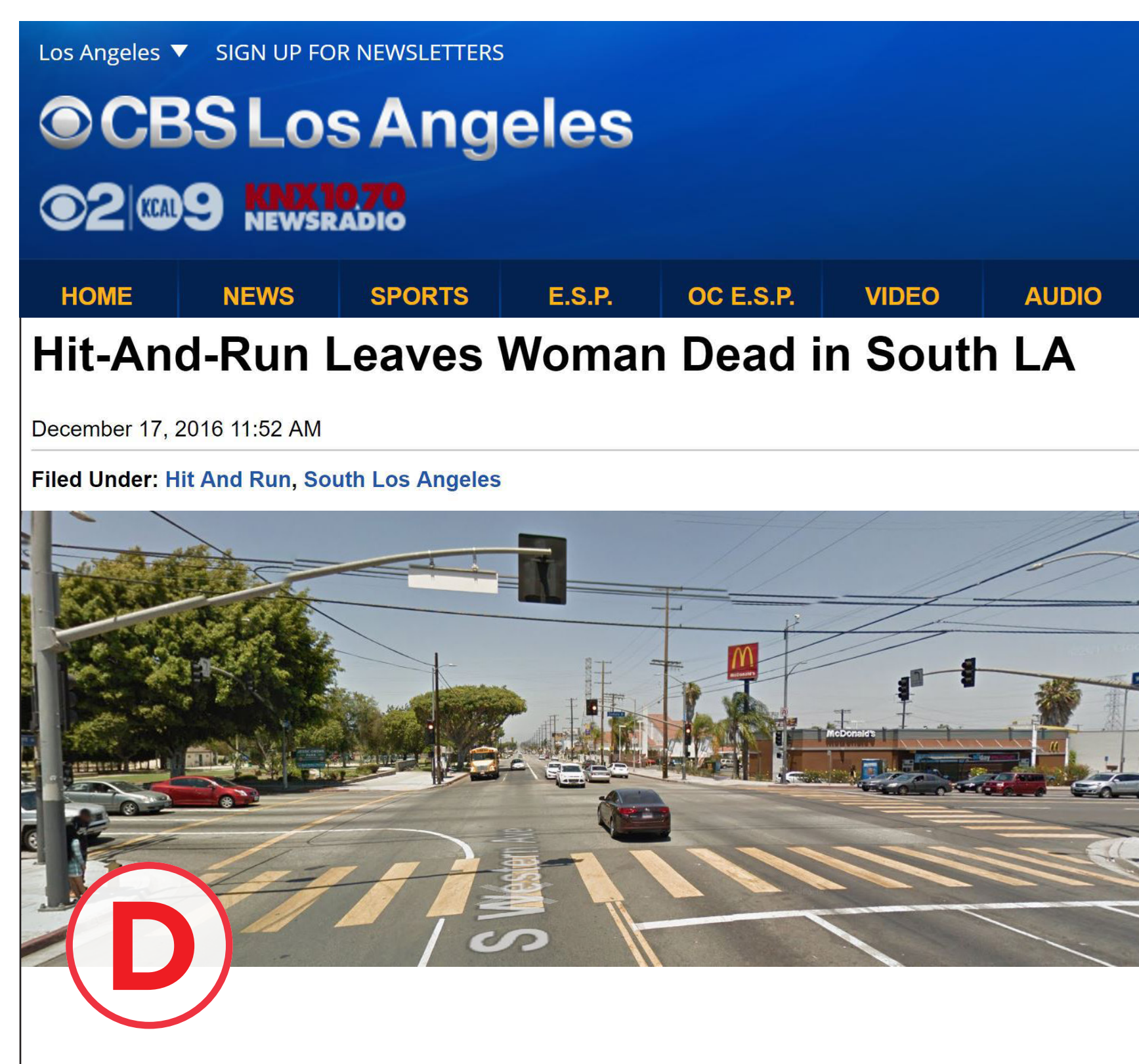
Source: CBS Los Angeles. Published: February 10, 2017.



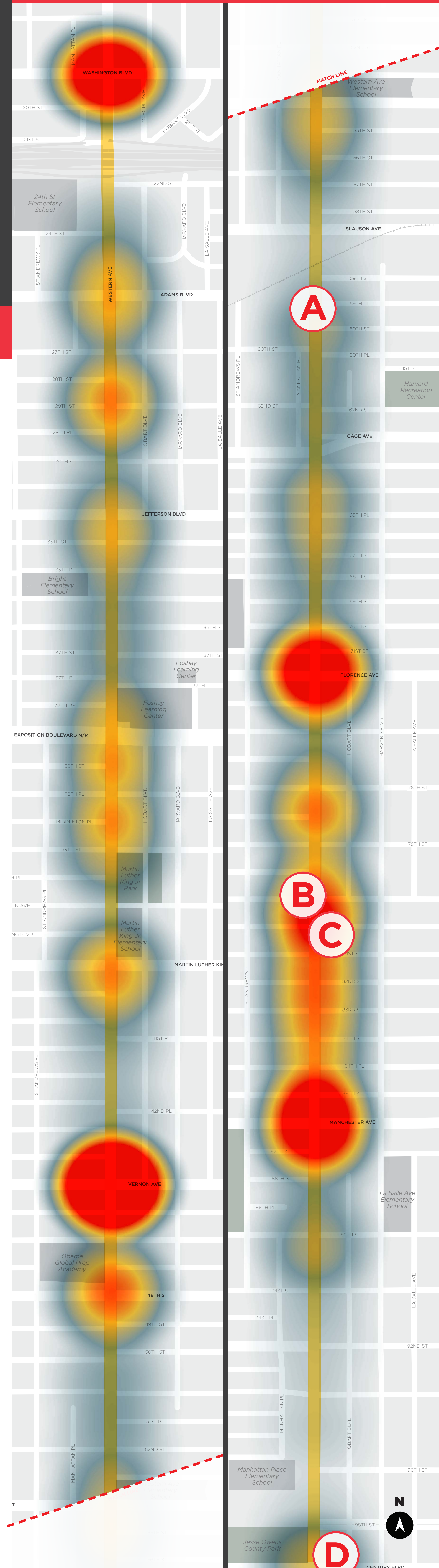
Source: Los Angeles Daily News. Published: August 27, 2014.



Source: KTLA 5 News. Published: September 14, 2016.



Source: CBS Los Angeles. Published: December 17, 2016.



LET'S IMPROVE WESTERN AVE TO SAVE LIVES

WE WANT TO HEAR FROM YOU

What is being planned on Western Avenue to improve safety?

LEGEND

PHASE I PHASE II

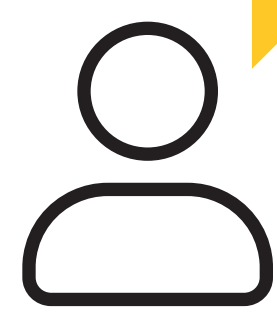
- Reorganize the Street
- Bicycle Lanes
- Speed Feedback Sign
- Signal Timing
- Leading Pedestrian Interval
- Intersection Tightening
- Add RRFB to Crosswalk
- New Crosswalk with RRFB
- Protected Turns
- New Traffic Signal
- Curb Extension
- Bus Stop Relocation



HIGH VISIBILITY CROSSWALKS
Additional painted stripes at crossings better define the space for people and help deter vehicles from moving into the crosswalk. At signalized intersections along Western Avenue, all crosswalks will be upgraded. Intersections near schools will receive yellow striping at crosswalks to help alert drivers to the presence of children.

What are your traffic safety observations along the corridor?

ON THE MAP TO THE LEFT, PLEASE MARK SPECIFIC TRAFFIC SAFETY CONCERNS



LEAVE A POST-IT NOTE HERE TO TELL US GENERAL TRAFFIC SAFETY CONCERNS FOR THE CORRIDOR

